



Distribution Systems

538 Series IntelliSwitch II™

The fully-automatic 538 Series IntelliSwitch II™ gas switchover is CONCOA's revolutionary next generation of gas management systems. The IntelliSwitch II™ features an onboard Web server and Proprietary embedded software allowing remote monitoring, secure system configuration, and e-mail notification of real-time system status and events. It is ideally suited to interchangeable service/continuous supply in analytical laboratory, chemical process, instrumentation and critical gas supply applications. The IntelliSwitch II™ offers continuous pressure and flow control from liquid or high pressure cylinder sources. The end-user selects the ideal mode of supply by the simple push of a button. Proprietary software logic lowers yearly gas costs by eliminating liquid cylinder vent loss and excess residual return. It is these features which make the 538 Series IntelliSwitch II™ the perfect gas management system.

Advanced Features

- Micro-Processor Control
Fully automatic priority assignment
- Remote and Field Adjustable Software
Enables process flexibility and remote monitoring
- On-Site or Remote Source Selection
Liquid cylinder or high-pressure service
- On board Web Server and Remote Software
Enables remote monitoring and control functions
- Low Loss Technology
Reduces residual return
- Electronic Economizer
Eliminates liquid cylinder vent loss
- Process Gas Pilot Valve
Simple installation
- RS 232 or 485 Communication
Provides remote monitoring of supply
- NEMA 4 Enclosure Standard
Install anywhere



Ask About Our
EXTENDED
WARRANTY
On This CONCOA Product

Applications

Assist Gas Delivery from Liquid

Cylinder Supply

Nitrogen
Oxygen

Assist Gas Delivery from High Pressure Supply

Air
Nitrogen
Oxygen

Assist Gas Delivery from Micro-Bulk or Bulk Supply

Nitrogen
Oxygen

Laser Welding Shielding Gases

Argon
Carbon Dioxide
Helium

Materials

Bodies

Brass barstock

Seats

PCTFE or Viton®

Seals

Viton®, Neoprene, and PTFE

Enclosure

Powder Coated Steel

Specifications

Power Requirements

115 or 230 VAC

Maximum Inlet Pressure

3,000 PSIG (210 BAR) or
4,500 PSIG (310 BAR)

Temperature Range

0 to 140°F (-18° to 60°C)

Filter

40-micron

Connections

1/2" FPT inlet and outlet
1/8" FPT (external pilot inlet)

Cv

2.0 (3,000 PSIG max)
1.0 (4,500 PSIG max)

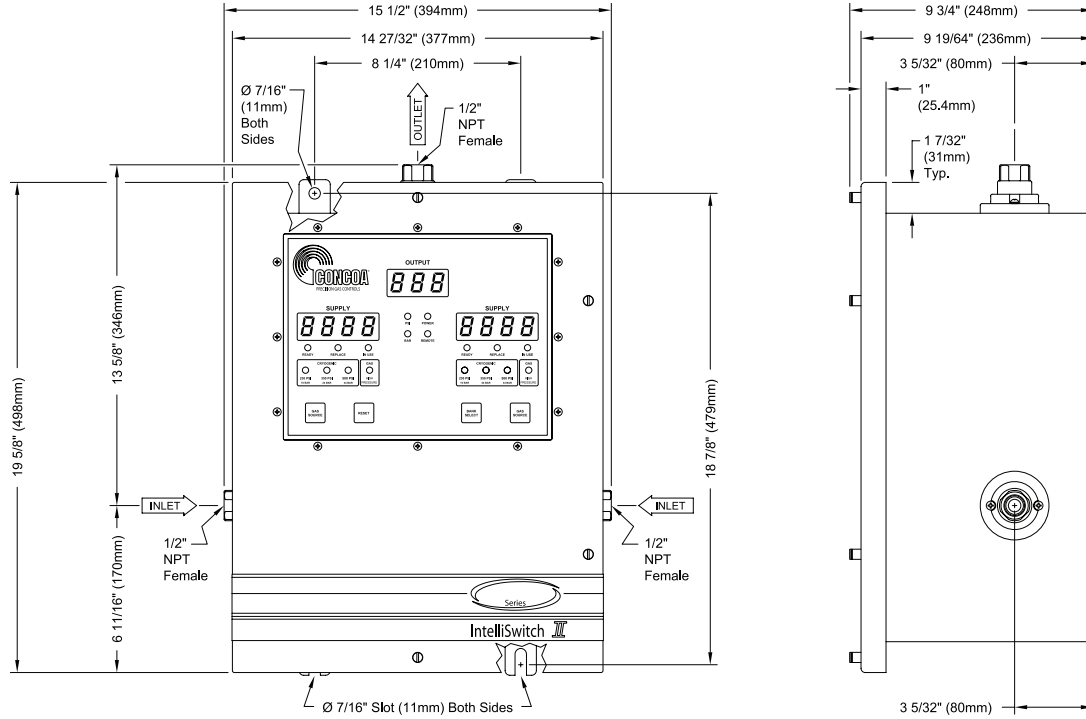
Weight

67 lbs. (30.4 kg)

Distribution Systems



Installation Dimensions



Ordering Information

538	A	B	C	D	-XX	-CON
Series 538	Delivery Pressure	Right Side Connection	Left Side Connection	Assembly	Assembly	Pigtail
	3: 100 PSI/ without web server	0: 1/2" Female NPT Port	0: 1/2" Female NPT Port	6: 3000 PSI Inlet/120 VAC	-01: Standard	Please specify inlet connection (if applicable)
	4: 150 PSI/ without web server	1: Diaphragm Valves with 36" stainless flexible pigtail	1: Diaphragm Valves with 36" stainless flexible pigtail	7: 3000 PSI Inlet/240 VAC	-0A: Tamper Resistant Option	CGA DIN 477 BS 341 and others available.
	5: 200 PSI/ without web server	2: Diaphragm Valves with 72" stainless flexible pigtail	2: Diaphragm Valves with 72" stainless flexible pigtail			
	C: 100 PSI/ with web server	3: Manifold Connector	3: Manifold Connector			
	D: 150 PSI/ with web server					
	E: 200 PSI/ with web server					

Options

Option	Order Number	Description
Remote Alarm	Advantium Series	Provides audible and visual notification of a depleted supply bank to a remote location
Vent Manifold Kit	629 Series	Wall-mounted manifold designed to equalize liquid cylinder head pressure.