

MANIFOLDS



631 SERIES SIMPLEX HF

The 631 Series Simplex combines a modular manifold system with the extra heavy-duty 6700 Series regulator. Line or station regulators should be installed at the point of use to ensure constant delivery pressure. Use of Acetylene requires flashback arrestor on hoses.

Advanced Features

6700 Regulator

High-flow capacity

Pressure Ranges 0-15 to 0-200 PSIG

Broad range of applications

Integral Maniflex Manifold System

Easy installation and expansion

Left and Right Banks

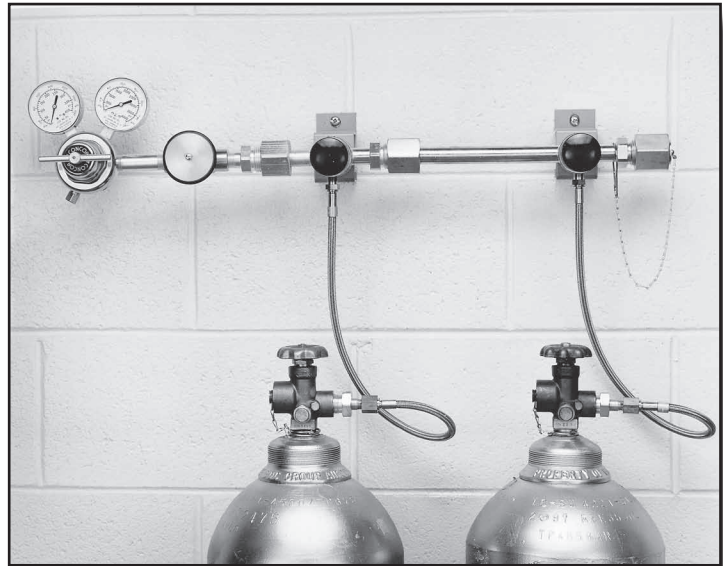
Sizes to fit cylinders on either side

Standard or Compact Lengths

12" or 6" lengths for easy installation

Hose Style Variety

Copper, brass, or flexible stainless steel



Applications

Pipeline Supply Source

200 PSIG delivery pressure meets NFPA guidelines without compromising flow capacity (15 PSIG maximum for Acetylene)

Fuel Gases

Safely supply Acetylene and other fuel gases for cutting, heating or welding with OSHA regulation compliant manifold systems. Use of fuel gas requires flashback arrestor on hoses.

Materials

Delivery Regulator Body

Brass barstock

Delivery Regulator Bonnet

Forged brass

Master Valve

Forged brass

Diaphragm

Fabric-reinforced neoprene

Internal Seals

PTFE and Neoprene

Seat

Neoprene and Viton®

Piping

Forged brass

Hose Core

Stainless steel
PTFE
Rigid copper

Hose Fittings

Brass

Hose Casing

Armored stainless steel
Stainless steel braid

Specifications

Maximum Inlet Pressure

3000 PSIG (210 BAR)

Temperature Range

-40 to 140°F (-40 to 60°C)

Maximum Flow

6000 SCFH (2830 LPM)

Outlet Connection

1/2" FNPT

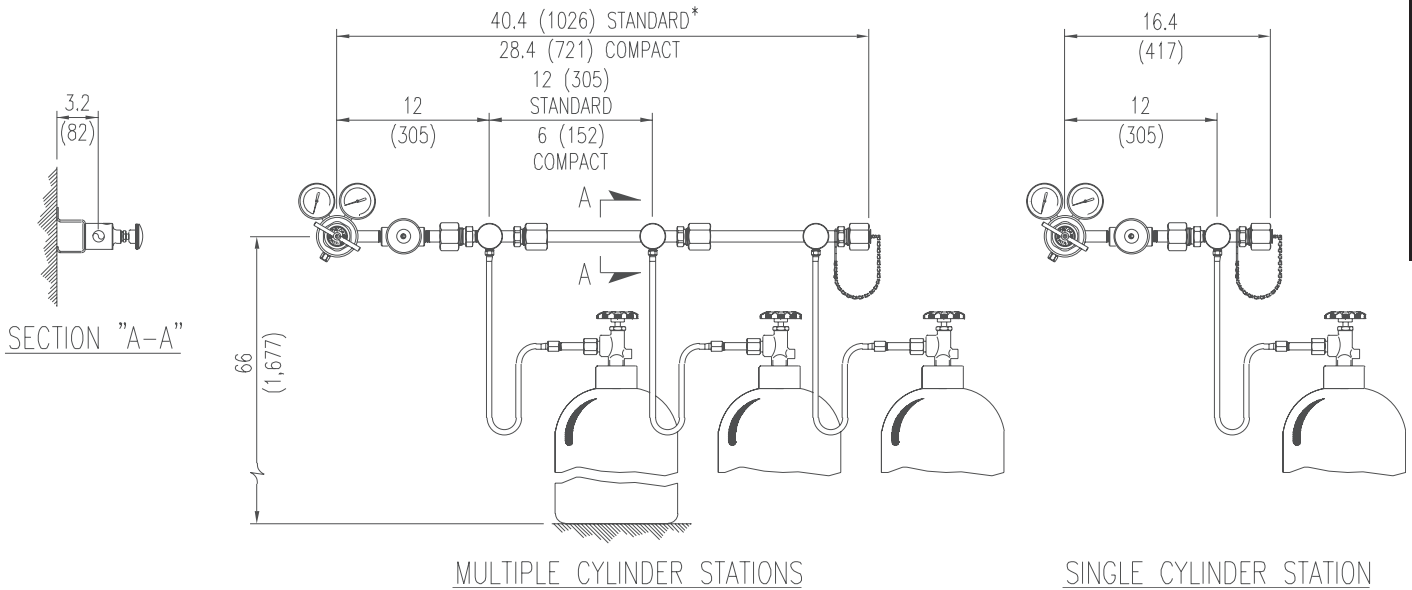
Weight

23 lbs. (10.4 kg)

MANIFOLDS



Mounting and Dimensional Information for the 631 Series Simplex HF



DISTRIBUTION SYSTEMS

Ordering Information

Series	Outlet Pressure	Manifold Style	Hose Style	Stations/Side	-Cylinder Connection	Options
631	1: 0-15 PSIG (0-1 BAR)	1: Standard Length (12" between stations) Right Side with One Cylinder/Station	2: 24" Rigid Copper	1: One Station	Inlet connection (if applicable) PTFE-lined hoses for Oxygen service include accumulator extensions to prevent ignition from adiabatic compression. PTFE-lined hoses not for use with Helium or Hydrogen.	C: Foreign Inlets Carbon Dioxide & Inert F: Arrestor for 300, 410, 510 R: Foreign Inlets Air, Hydrogen, Oxygen, Oxygen Mix
	2: 0-40 PSIG (0-3 BAR)	2: Standard Length (12" between stations) Left Side with One Cylinder/Station	3: 72" Flexible Stainless Steel Armor Case with Stainless Steel Core	2: Two Stations		
	3: 0-120 PSIG (0-9 BAR)	3: Standard Length (12" between stations) Right Side with Two Cylinders/Station	4: 24" Flexible Stainless Steel Braided with PTFE Core	3: Three Stations		
	4: 0-200 PSIG (0-15 BAR)	4: Compact Length (6" between stations) Right Side with One Cylinder/Station	5: 36" Flexible Stainless Steel Armor Case with Stainless Steel Core	4: Four Stations		
	5: 0-15 PSIG* (0-1 BAR)	5: Compact Length (6" between stations) Left Side with One Cylinder/Station	6: 36" Flexible Stainless Steel Braided with PTFE Core	5: Five Stations		
		6: Compact Length (6" between stations) Right Side with Two Cylinders/Station	7: 24" Flexible Stainless Steel Armor Case with Stainless Steel Core	6: Six Stations		
		7: Standard Length (12" between stations) Left Side with Two Cylinders/Station	8: 36" Rigid Brass with Flash Arrestor (CGA 300 & 510 Acetylene)	7: Seven Stations		
		8: Compact Length (6" between stations) Left Side with Two Cylinders/Station	9: 72" Flexible Stainless Steel Braided with PTFE Core	8: Eight Stations		
				9: Nine Stations		
	*Outlet gauge redline for Acetylene service					